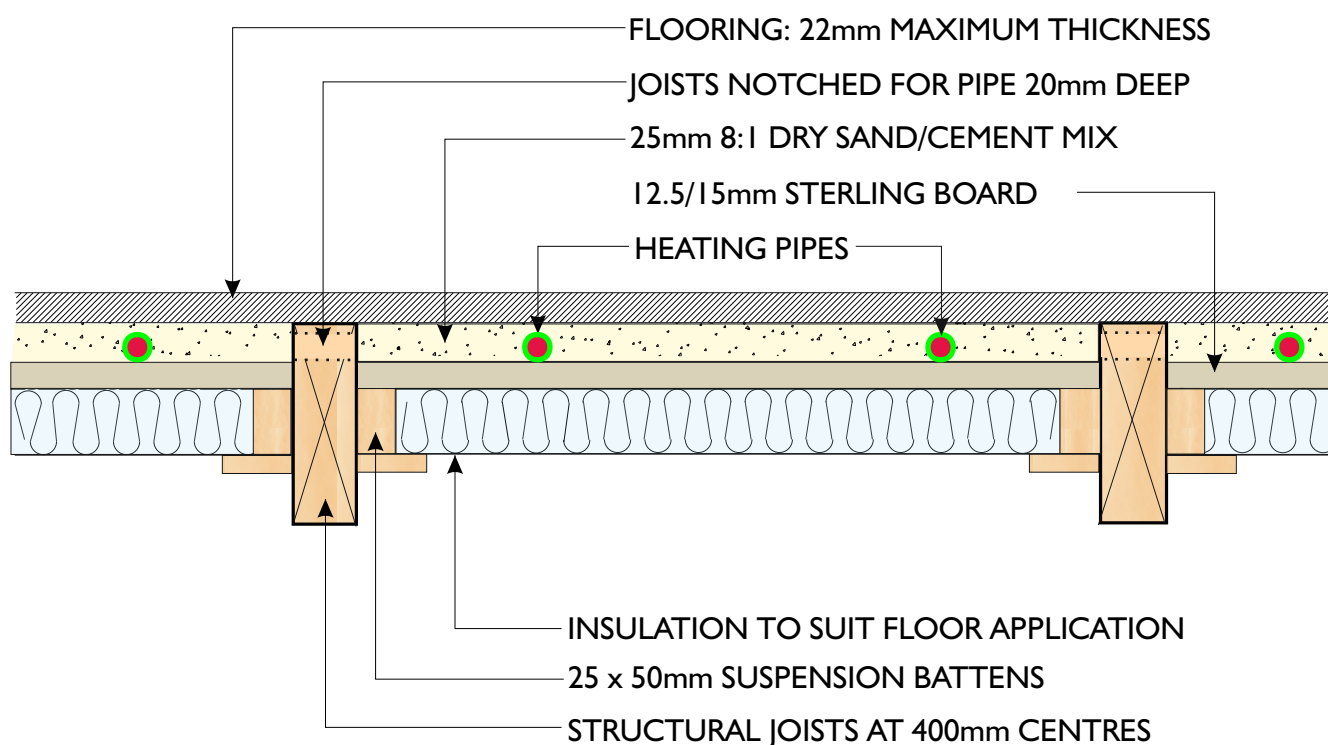




PIPE INSTALLATION BETWEEN JOISTS WITHIN A SUSPENDED TIMBER FLOOR



This technique may be used where it is not possible to lay the pipes above the joists, e.g., where floor levels are fixed and cannot be altered. This method is more labour intensive but the end result is the same as the preferred 'pipes above' method. The joists are notched to allow the pipes to pass between the spaces. The space around the pipe is infilled with a dry sand/cement mix which provides the thermal mass needed to conduct the heat through the floor. Insulation should be a minimum 100mm rigid board.

Please note If using this method you should check with your architect or structural engineer as to the suitability of this technique, and we must have authorisation in writing before installation commences. We cannot accept responsibility for loss or damage to property due to the increased weight loading and stresses on the joists due to notching.

Insulation: Rigid insulation boards must be used for ground floors, recommended 100mm fitted hard up and fully supported against the under side of the sub-base. Mineral wool or similar can be used for upper floors, but all through draughts between the joists must be eliminated.